

5 years · anni
Year
Jahre · años

Guarantee
Garantie · Garanzia · Garantia

3 + 2 year
with online registration



Syncra SDC

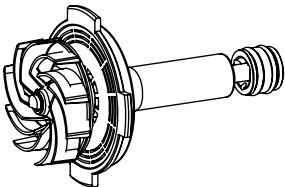
CENTRIFUGAL RETURN PUMP

PSK SDC

SKIMMER PUMP

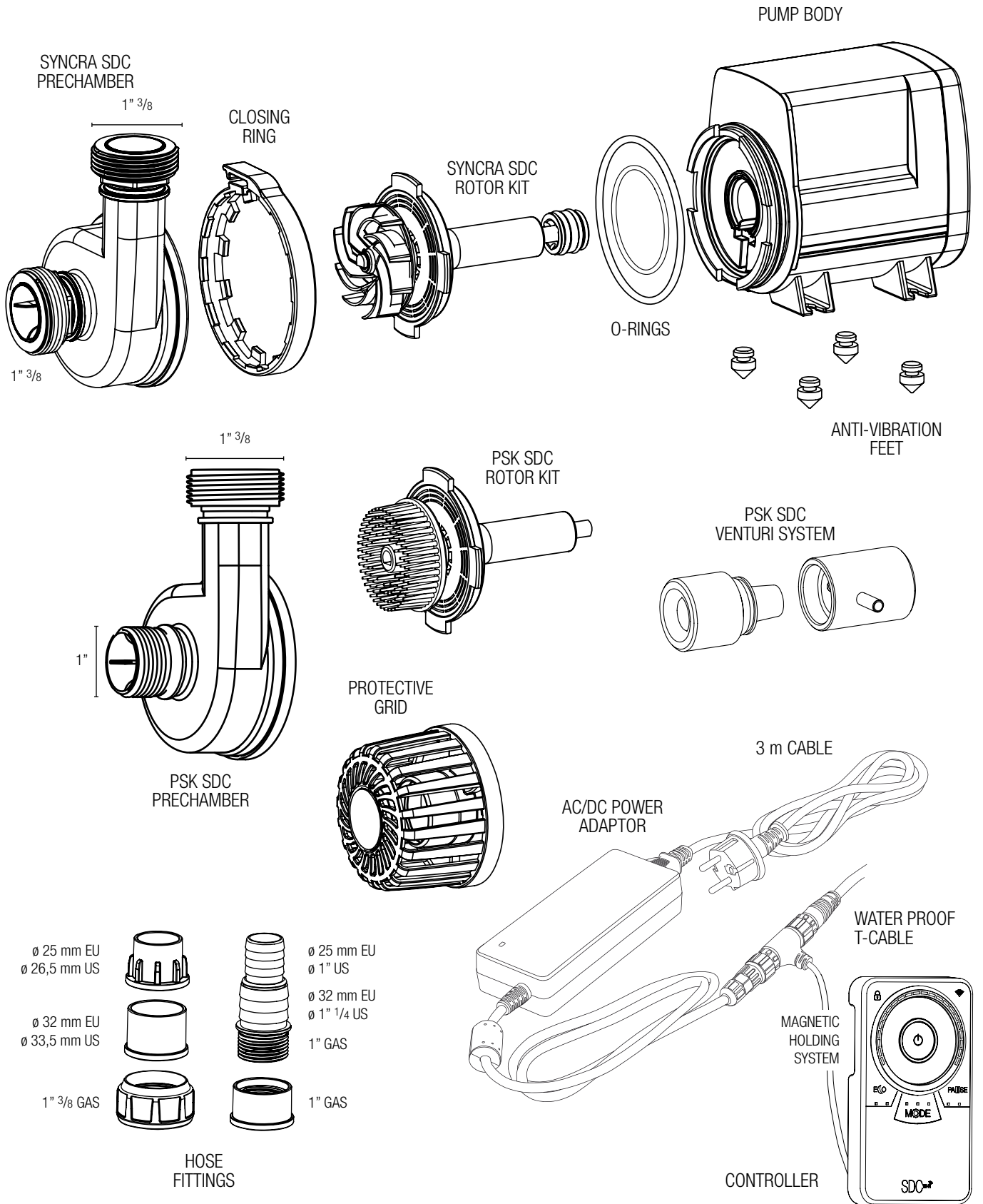


TECHNICAL DATA SHEET

Syncra SDC	7.0	9.0
LIQUID HANDLED	SALT WATER - FRESH WATER	
MAX TEMPERATURE	40° C	
APPLICATION	WET & DRY	
CONSTRUCTION		
IMPELLER	SINGLE CHANNEL	
INTEGRATED PROTECTIVE DISK		
SHAFT	POLISHED - HIGH QUALITY CERAMIC, CALIBRATED WITH PRECISION MACHINE	
BEARING	POLISHED - HIGH QUALITY CERAMIC, CALIBRATED WITH PRECISION MACHINE	
PIPE CONNECTION		
IN LET	1" 3/8	
OUT LET	1" 3/8	
HOSE FITTINGS	RIGID AND FLEXIBLE PIPES FOR WET & DRY DIY MOUNTING	
CHAMBER	360° ROTATION	
MATERIALS		
CASING	ABS	
IMPELLER	POM	
CASING COVER	ABS	
CASING RING	ABS	
HOSE FITTINGS	ABS	
ANTI-VIBRATION FEET	SYLICON	
O-RINGS	NBR	

Syncra SDC		7.0	9.0
MOTOR			
TYPE	SINGLE PHASE		
NO. OF POLES	2		
ROTATION SPEED (RPM)	MIN 1500 MAX 3600		
INSULATION CLASS	3		
PROTECTION DEGREE	IP X8		
POWER RATING (MIN - MAX)	20 - 65 W	30 - 95 W	
VOLTAGE	24 V		
OVER LOAD PROTECTION	BUILT-IN THERMAL PROTECTOR		
CABLE			
PUMP CABLE	3 m / 10 ft PVC		
AC/DC POWER ADAPTOR	100 - 240 V / 50 - 60 Hz / 24 VDC		
PLUG TYPE USA	1,2 m / 4 ft lenght		
PLUG TYPE EU	1,2 m / 4 ft lenght		
PLUG TYPE UK & AUS	1,2 m / 4 ft lenght		
Wi-Fi			
CONFIGURATION PASSWORD	sicceitaly		
FREE APPLICATION			
STORE	 		

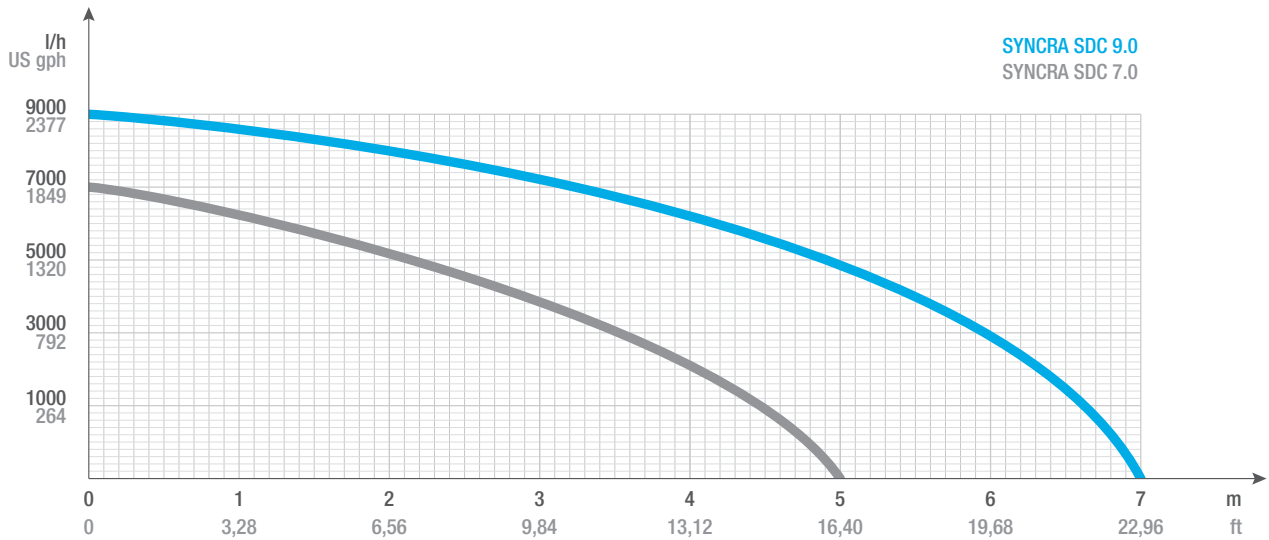
CONSTRUCTION



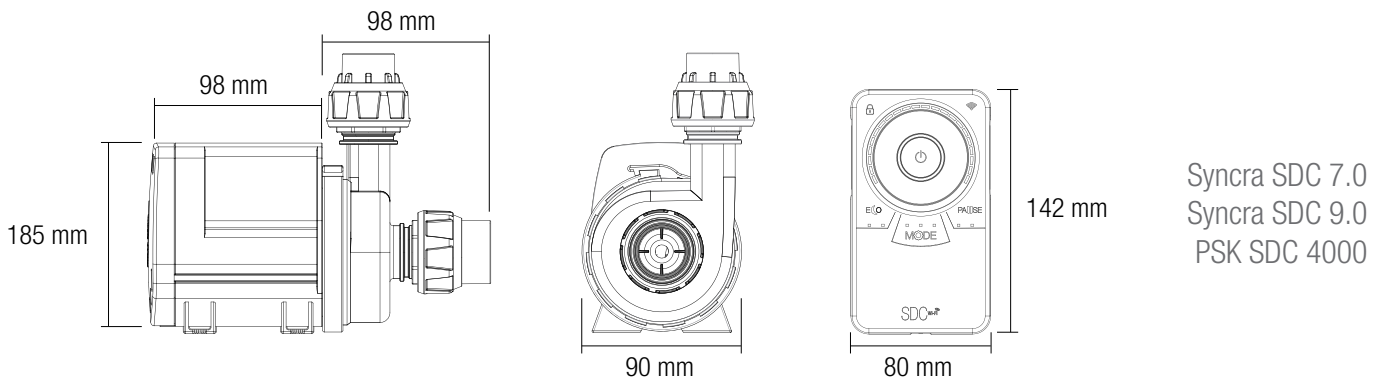
SPARE PARTS

CODE	DESCRIPTION
SGR0217	Impeller, rotor kit, O-ring SDC 9.0
SGR0218	Impeller, rotor kit, O-ring SDC 7.0
SGR0220	Needle wheel impeller, rotor kit, O-ring PSK SDC 4000
SVE0052	Bottom bearing + hook SDC 7.0 - 9.0 - PSK SDC 4000
SVE0053	Pre-chamber and rotor O-rings
SVE0033	Anti-vibrations silicon feet (4 pcs.)
SPL0095	Pre-chamber + closing ring SDC 7.0 - 9.0
SPL0096	Transparent pre-chamber + closing ring PSK SDC 4000
SPL0094	OPTIONAL Protective grid SDC 7.0 - 9.0
STR0029	Hose fittings for rigid and flexible pipes SDC 7.0 - 9.0
SKT0207	Controller for SDC and PSK SDC (all models)
SKT0208	AC/DC power adaptor EU plug
SKT0209	AC/DC power adaptor US plug
SKT0210	AC/DC power adaptor UK plug
SKT0211	AC/DC power adaptor AU plug
SPL0099	OPTIONAL Venturi PSK SDC 4000

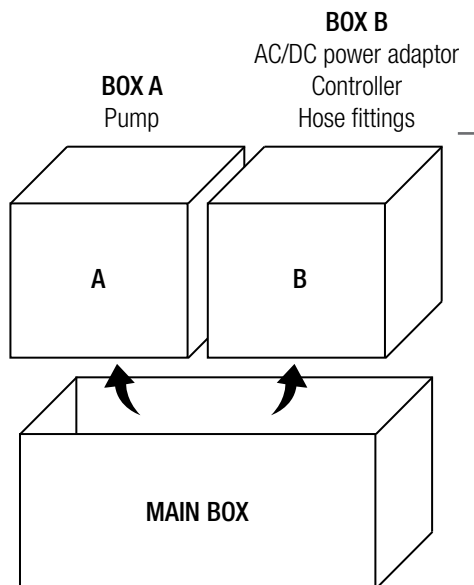
TECHNICAL PERFORMANCES



DIMENSIONS



LOGISTIC



BOX KIT

Syncra SDC 7.0
Syncra SDC 9.0
PSK SDC 4000

DIMENSIONS

384 x 190 x h 148 mm

TOTAL GROSS WEIGHT

5,5 kg

1 PALLET = 30 OUTERS = 120 UNITS

