

# EASY SELCO® 'S

THE ORIGINAL ENRICHMENT  
FOR THE EASY PRODUCTION OF ENRICHED ARTEMIA NAUPLII

## EASY SELCO®

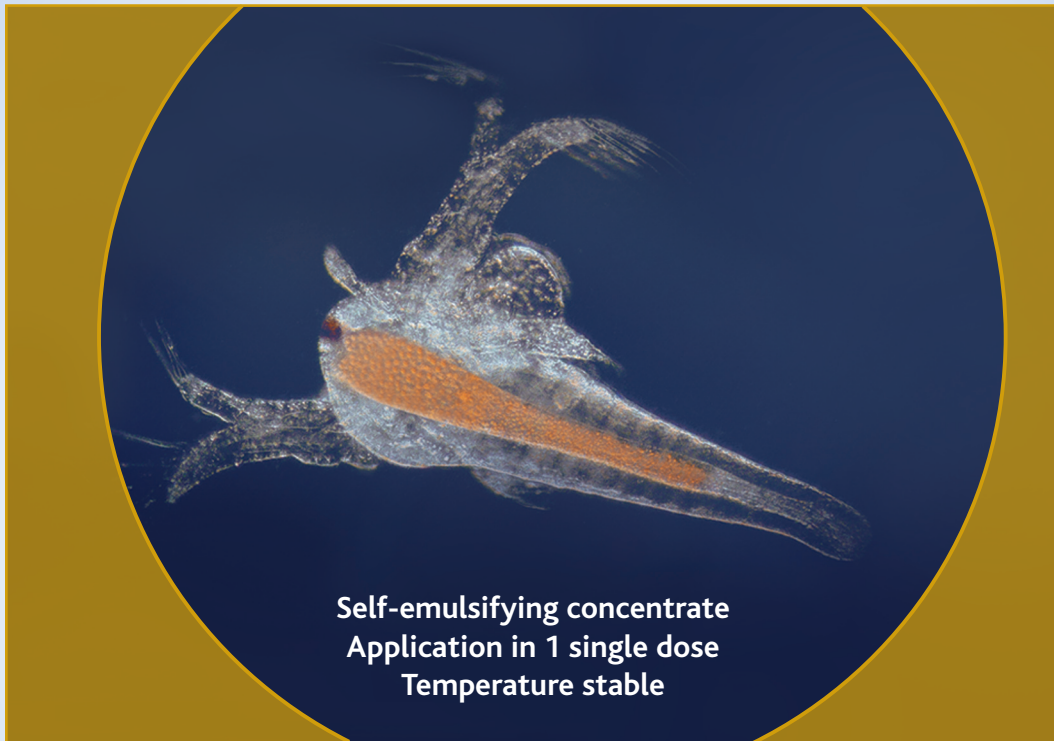
for enriched *Artemia* nauplii

## EASY DHA SELCO®

for enriched *Artemia* nauplii with the  
optimal DHA inclusion

## EASY SUPER SELCO®

for maximally enriched *Artemia* nauplii



INVE Aquaculture's "Easy Selco's", based on the original Selco®'s (Self Emulsifying Liquid Concentrates) are designed to simplify and optimize enrichment procedures.

- Easier preparation (no mixing required)
- Easier application (1 single dose)
- Easier storage (more temperature stable)

**Easy Selco®** allows for a standard enrichment with n-3 HUFA, **Easy DHA Selco®** incorporates higher levels of DHA in the *Artemia* and **Easy SUPER Selco®** contains the highest levels of n-3 HUFA.

As such, these products allow a specific enrichment profile to fit your rearing needs.  
Why compromise your success ?

## USE



### 1. Preparation:

Pour the required amount of product into a dry bucket. Use a strong water jet or pour the water in from a bucket (splashing) to emulsify 150g EASY SELCO® / EASY DHA SELCO® / EASY SUPER SELCO® per litre of (sea)water. No mixing is required; the product is self-emulsifying.

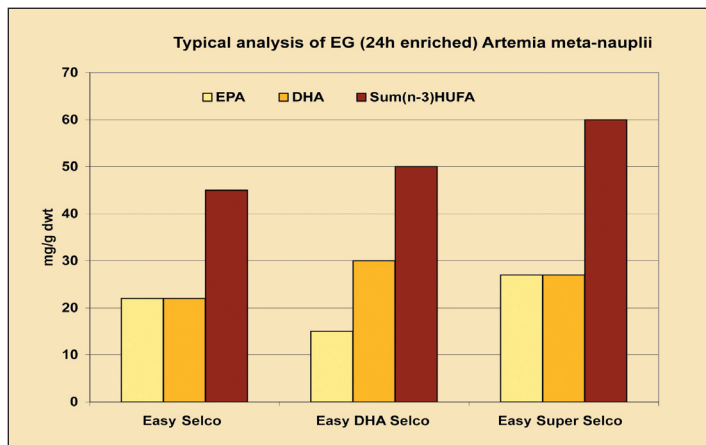
### 2. Enrichment of *Artemia* (T24):

Add one single dose of 0,6g EASY SELCO® / EASY DHA SELCO® / EASY SUPER SELCO® per litre of (sea)water in the enrichment tank, containing up to 300.000 *Artemia* nauplii. Enrich for a period of 24 hours while maintaining min. 4 ppm oxygen and a pH of 7,5-8,5 (by buffering).

## TYPICAL COMPOSITION

	EASY SELCO® - EASY DHA SELCO® - EASY SUPER SELCO®		
Moisture	30%		
Crude lipids	67%		
Crude ash	1%		
Crude fiber	1%		
Phosphorus	0.2%		
Vit. A	1.500.000 IU/kg		
Vit. D3	150.000 IU/kg		
Vit. E	3.600 mg/kg		
Vit. C	800 mg/kg		
Antioxidants	Ethoxyquin, BHA		
	EASY SELCO® - EASY DHA SELCO® - EASY SUPER SELCO®		
DHA/EPA	1	2,5	1
Sum(n-3)HUFA	min. 200 mg/g dwt	min. 200 mg/g dwt	min. 400 mg/g dwt

## DATA



Detail of Selco®-enriched *Artemia* digestive tract.

## PACKAGING

Available in cartons of 9 \* 1 kg bottles

## STORAGE

Store in a dry place (max. 20°C).

For prolonged storage, refrigeration (4°C) is advised. Once opened, the product should be used within one month and kept well closed. It can be stored at room temperature.

## TYPICAL PERFORMANCE

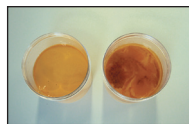
- More temperature stable during transport and storage.
- Stability test of the emulsion:

### 1 week at 70°C

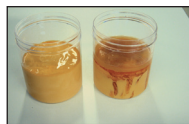


"EASY" SELCO® CONTROL\*

### 2 days at -18°C



"EASY" SELCO® CONTROL\*



"EASY" SELCO® CONTROL\*

\* Control = old SELCO®-formula