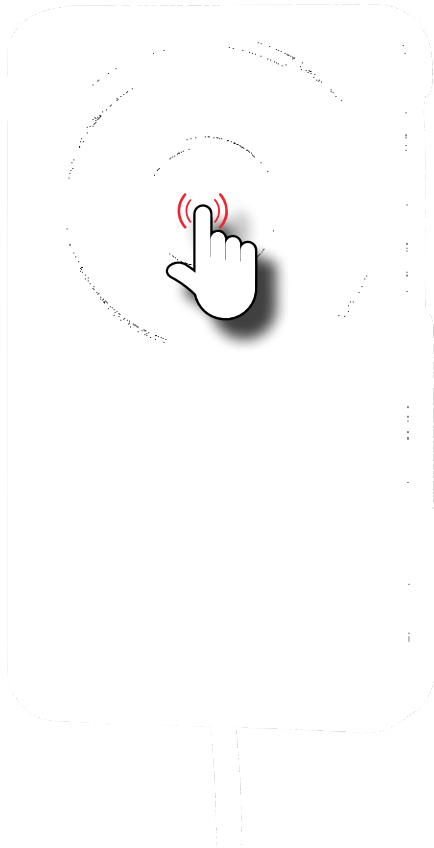



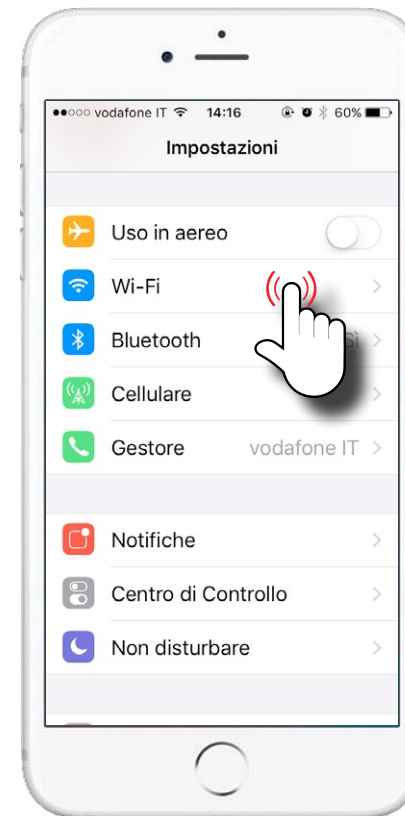
# CONTRÖLL Wi-Fi CONNECTION

## STEP 1



Press the  **ON/OFF KEY** on the controller to switch it on.

## STEP 2



In **SETTINGS**, open **Wi-Fi**

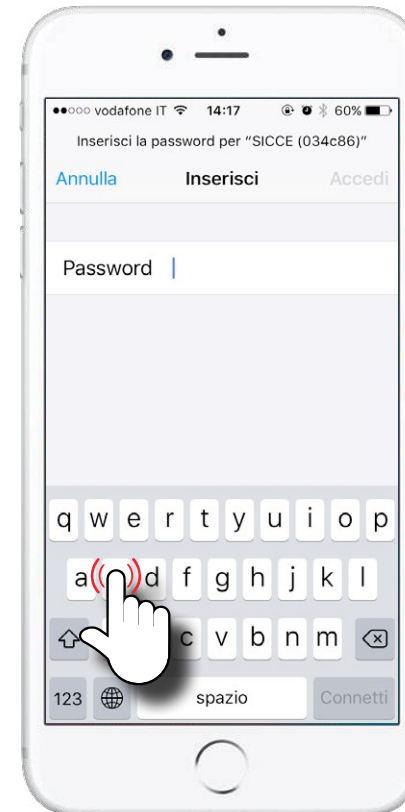
# CONTRALL Wi-Fi CONNECTION

STEP 3



Select **SDC** pump's network.

STEP 4



Write the password: **sicceitaly**

# CONTRALL

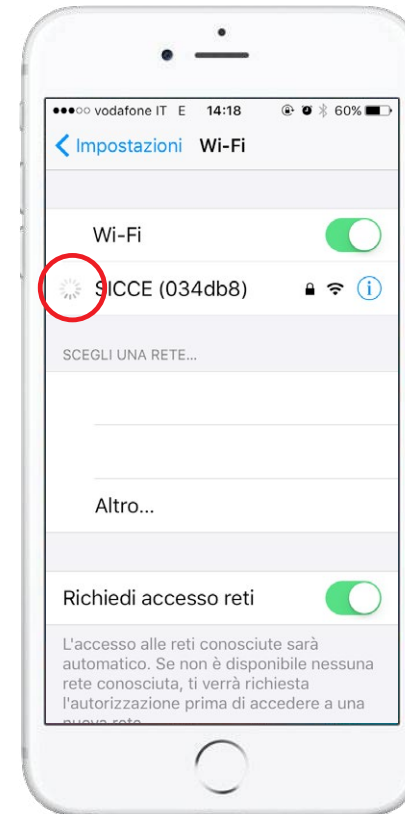
## Wi-Fi CONNECTION

STEP 5



Connect.

STEP 6



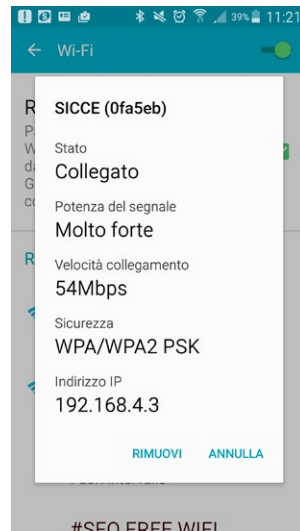
**Wait:** the system is processing data.

# CONTRALL Wi-Fi CONNECTION

## STEP 7



Press on “Configure WiFi” when the screen appears.



With **Android** you should open 192.168.4.3 (the IP address) on your browser to reach this screen.

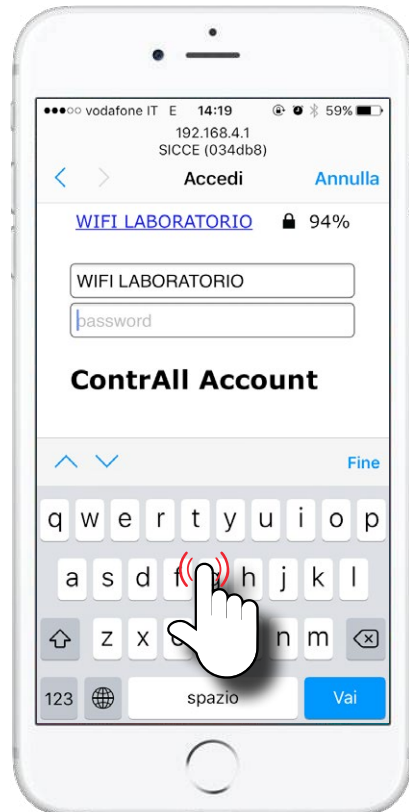
## STEP 8



Click on your **network**, on the top of the page.

# CONTRALL Wi-Fi CONNECTION

## STEP 9



Type the **password** related to it.

## STEP 10



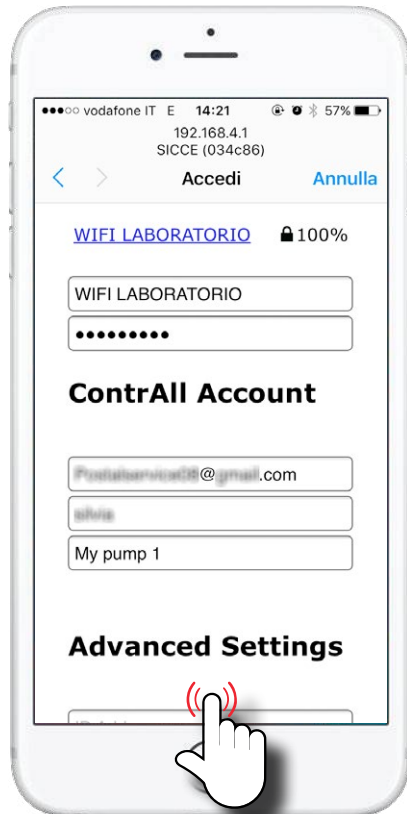
Insert your **APP ContrALL login & password** (you have set your account the first time you opened ContrALL App).

Give a **name** to your SDC pump (for example "My pump 1").

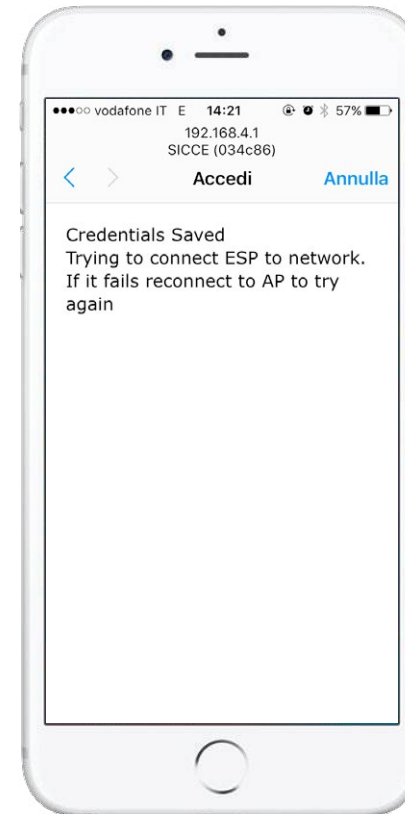
# CONTRALL Wi-Fi CONNECTION

## STEP 11

## STEP 12



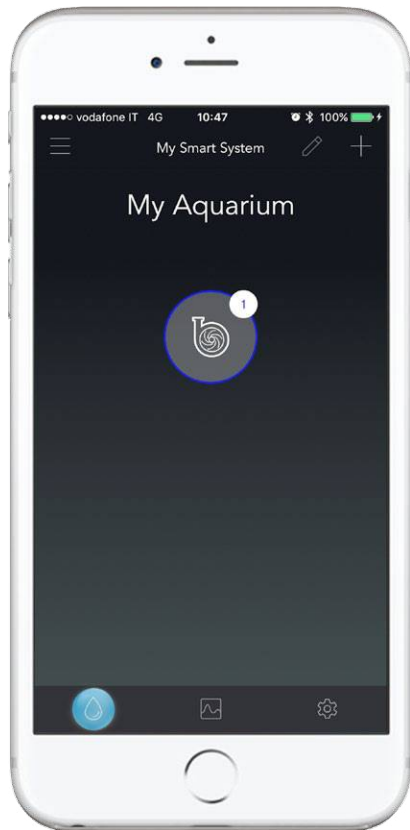
Press **SAVE**.



If you see this screen, **wait** few seconds.

# CONTRALL Wi-Fi CONNECTION

## STEP 13



Open **ContrALL** App and you will see the pump.

